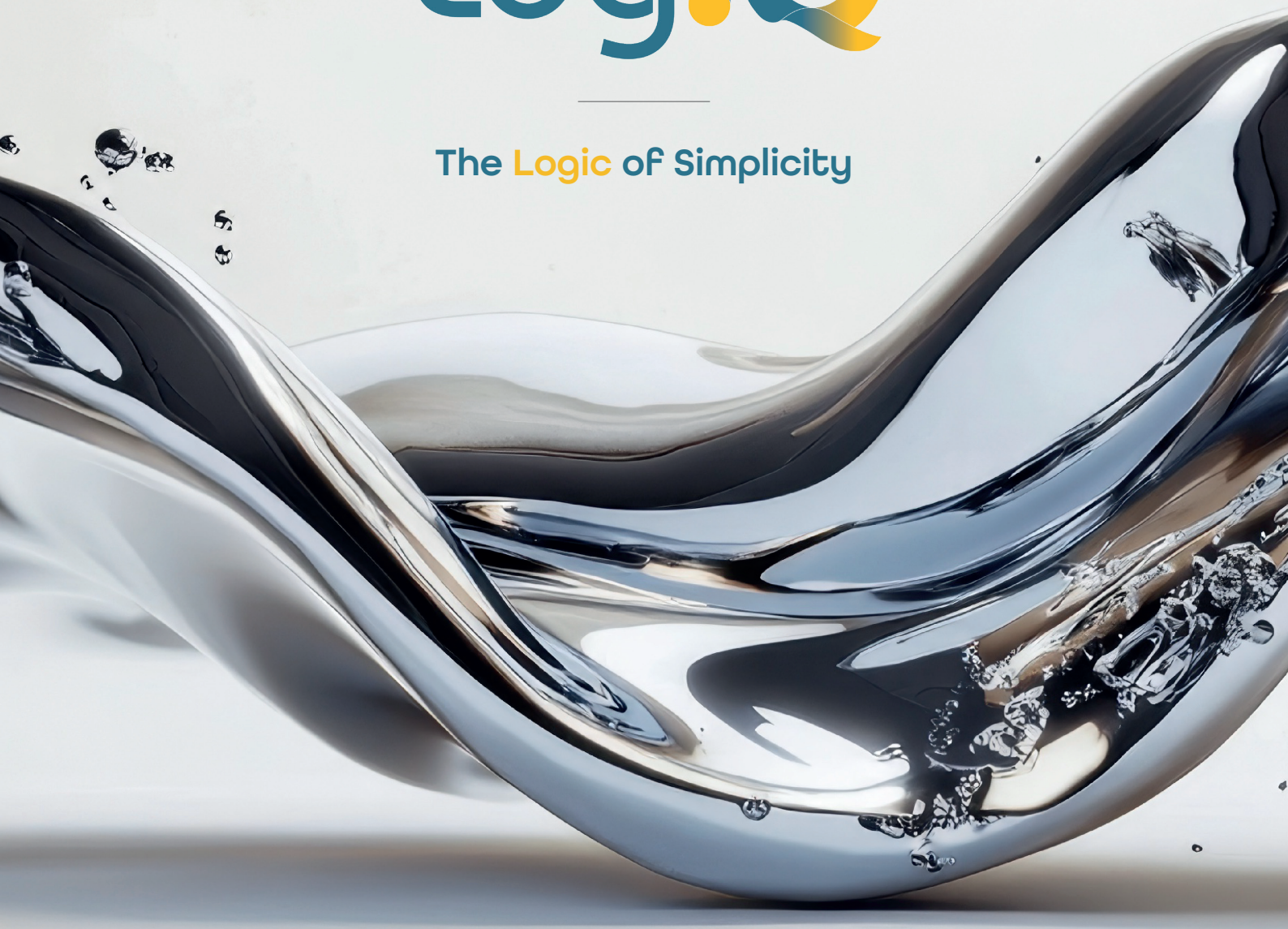


scan
LogiQ

The Logic of Simplicity



All-On-X Made Simple

ScanLogIQ revolutionizes full-arch treatment.

You can now deliver precise implant-supported restorations from scans performed with any scan device.

A validated digital workflow designed to provide precision, predictability, and clinical freedom.







The Logic of Simplicity

When treating edentulous patients requiring implant-supported restorations, the accuracy of intraoral scans can be compromised by multiple factors.

ScanLogiQ is specifically designed to neutralize these interfering variables.

Digital Full Arch: The Challenges



Large number of implants and significant distance between them.

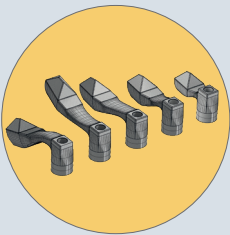


Pronounced arch shapes, soft tissue, tongue, lips, saliva and reflective surfaces.



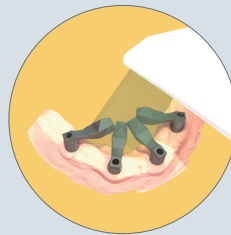
Large scanning areas with limited reference points between one scanbody and another.

Our Solution



SCANBODY KIT

Specific set of scan bodies.



DATA SETS

Customized scan data sets.



ASSISTLOGIQ

Dedicated software for data processing and real time validation.



The core of the system

.....

The core element of the system is the **ScanFlagiQ** scanbody, engineered to focus data capture within a compact, controlled area positioned away from common sources of scanning interference. Its orientation toward the central and anterior region of the mouth leverages zones that are more accessible to most scanners and inherently less susceptible to distortion or scanning challenges. With **five distinct geometries**, ScanFlagiQ adapts seamlessly to a wide range of clinical scenarios, enhancing accuracy and streamlining the overall digital workflow.



.....

Scanning the ScanFlag iQ, once the flags are placed intraorally with their ends touching, allows the scanner to capture only the central area. This creates a smaller, more focused scanning zone that makes the clinical workflow easier and more efficient.

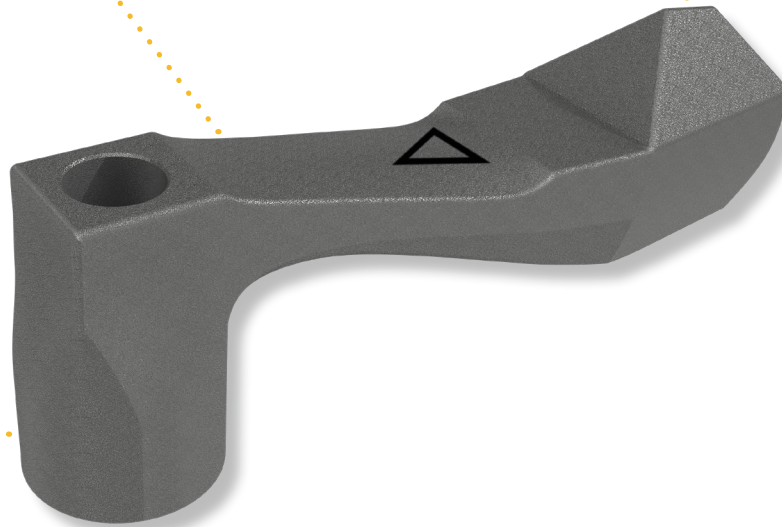
Flexibility

5 different shapes for clinical adaptation.

Scan Region

Compatibility

Screw-retained abutment systems.



Check of Available Connections



Design

The specific design and manufacturing quality of the components make Scan Flag iQ true **high-precision** measuring devices, capable of digitally transferring implant positions with outstanding **reliability** and **predictability**.

Scanbody **ONE SHOT iQ**

One Shot iQ is the scanbody developed to capture Full Arch and multiple implant-supported restorations.

Thanks to its geometry and reduced size, it simplifies all intraoral scanning phases.



Optimized to fully comply with the fundamental principles of intraoral scanning.



Simultaneous scanning of scanbody and soft tissues. Smooth, continuous, and simple scanning.



Dedicated Library.

Scanbody **REVERSE iQ**

.....

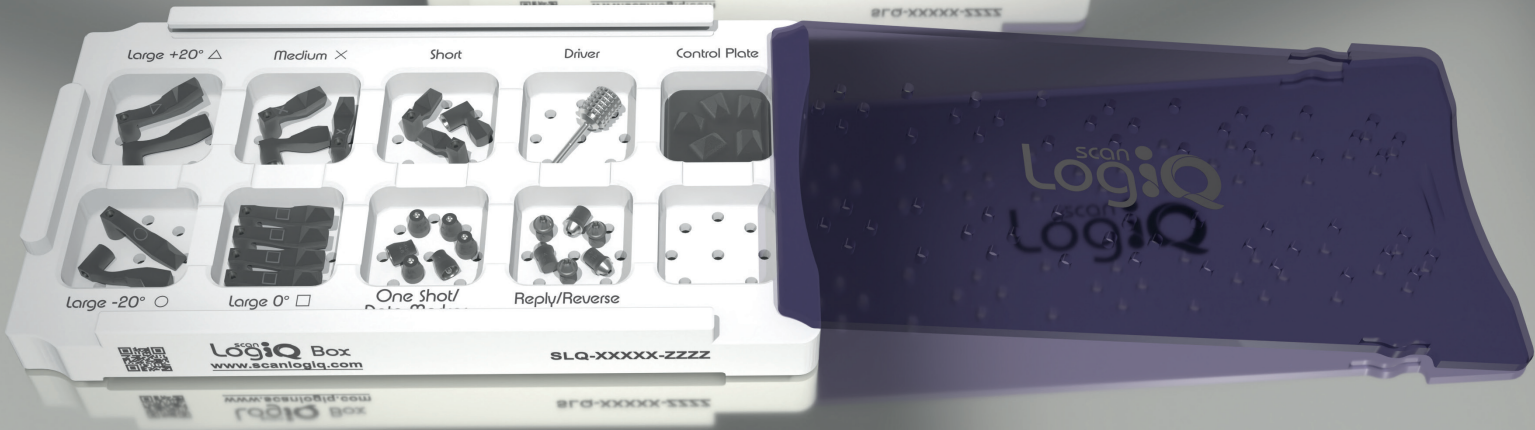
The Reverse iQ has been designed to enable simple and easy extraoral registration of a temporary or existing prosthesis using your intraoral scanner.



Optimised for capturing and correlating prosthetic and biomechanical information.



Dedicated Library.



Kit

ScanLogiQ

5 different Scan Flag iQ configurations designed to manage scanning even in cases of distally tilted implants, thanks to their special geometries.

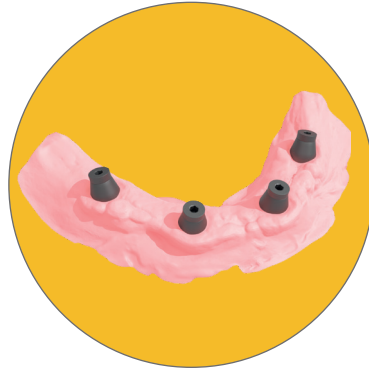


Workflow

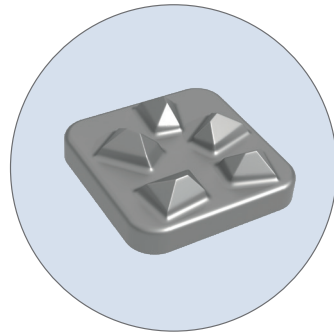
STEP 1

SOFT TISSUE SCAN WITH
ONE SHOT IQ

Mandatory/Required

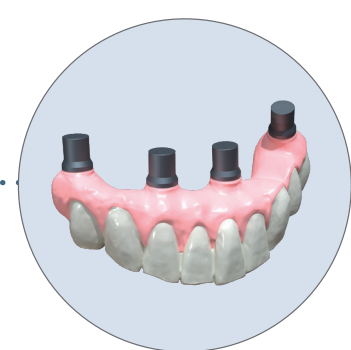


IO DEVICE VALIDATION
CHECKING USING THE
CONTROL PLATE IQ TOOL





STEP 2
IMPLANT SCAN WITH
SCAN FLAG IQ
Mandatory/Required



STEP 3
PROVISIONAL
RESTORATION SCAN
WITH **REVERSE IQ**

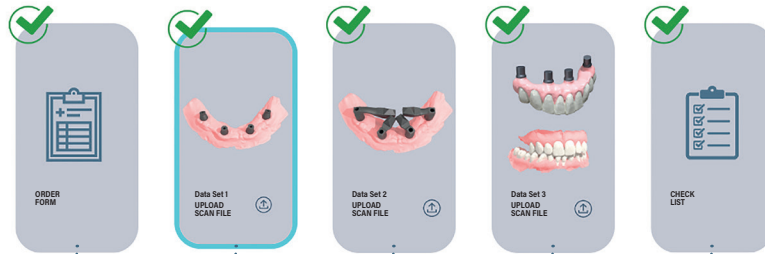


The Software



The dedicated AssistLogiQ software is the file manager for the entire system.

- Provides **optimized** flag position configuration for optimal results.
- **Checks and validates** the quality of all scans in real time.
- Identifies potential issues and suggests **solutions**.
- Generates accurate working files **compatible with any CAD software** available on the market.
- Provides guaranteed framework **passivity**.



Order Form

Gingival tissue scanning with One Shot iQ

Implant scanning with Scan Flag iQ

Temporary prosthesis scanning with Reverse iQ

Check List



What Sets Us Apart



**Compatibility with any
IO device**



Real-time scan validation



100% Passive Full Arch



**Reduced risk of errors
and optimized clinical
workflow time**



**Accurate detection
of implant positions**



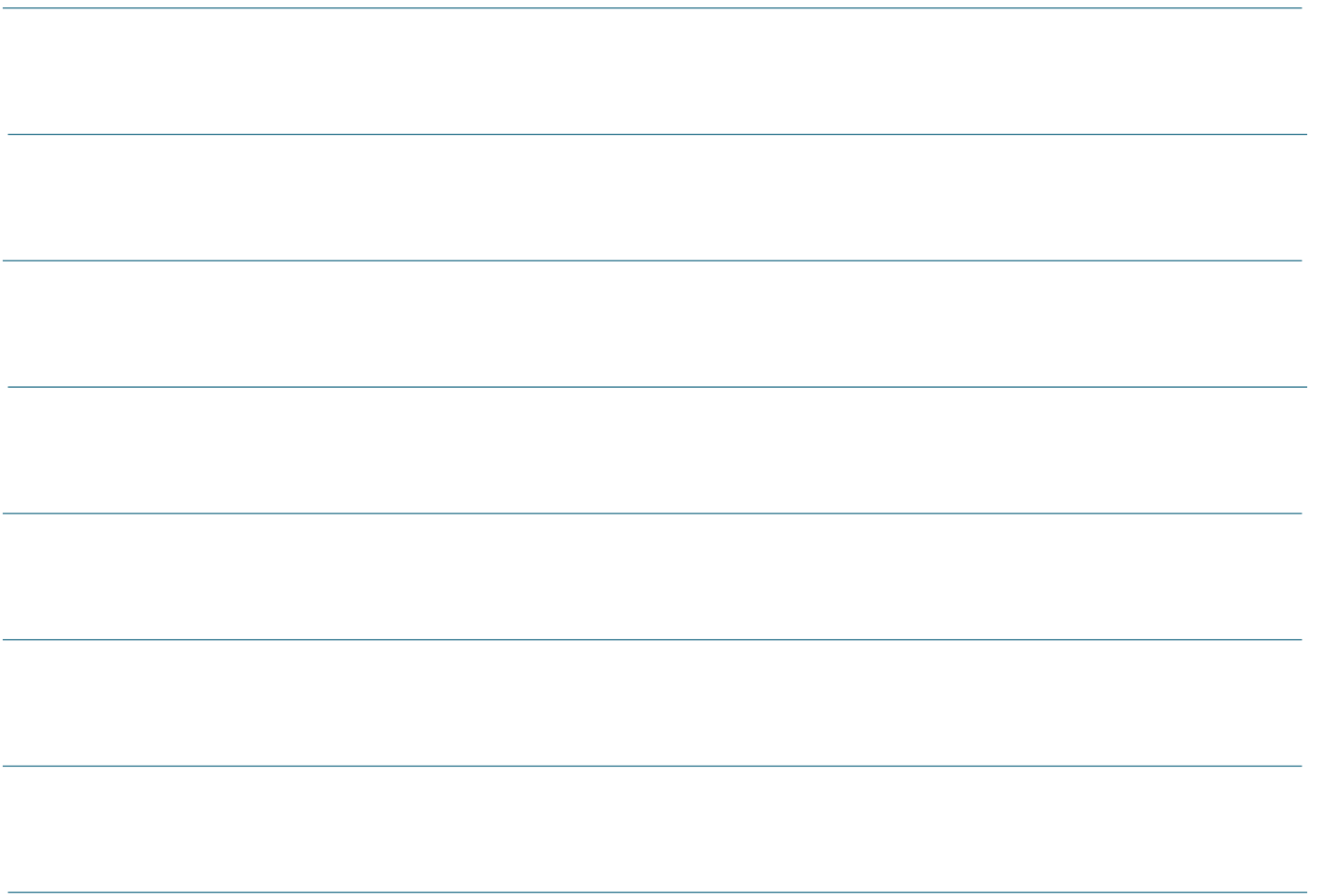
Fully digital workflow

Passive fit for your
Full Arch case, always.

DISCOVER MORE



Notes





Dental Group

Contact

1330 SW 22nd St, Suite
200, Miami, FL 33145,
USA

(305) 392-1427
info.usa@ipd2004.com
www.scanlogiq.com